

**Childers Cove 1
(PEP 154)
Vertical Gas Exploration Well
CDL Rig 7
P&A
Depth-Time Curve**

- Drilled with Century Rig 7**
- A. 508 mm conductor set at 27m before rig moves on.
 - 1. Drill 311 mm hole to 550m
 - 2. 245 mm casing set at 544.5m, lost returns, work casing to regain returns while pumping cement. Casing stuck 2.5m above planned setting point.
 - 3. Install A section and BOP, pressure test
 - 4. RIH with PDC bit, drill cement and 3 m new formation, LOT to 1.73 sg
 - 5. Drill 216 mm hole with PDC bit at 15 m/hr
 - 6. Wiper trip to shoe
 - 7. Drill 216 mm hole with PDC bit at 12 m/hr
 - 8. Short wiper trip
 - 9. Drill 216 mm hole with PDC bit at 8 m/hr
 - 10. Short wiper trip, POH
 - 11. Run wireline logs: Super Combo and MDT (including samples)
 - 12. Wiper trip, layout drillstring
 - 13. Run plugs (or, add 1 day for 178 mm production casing and cement)

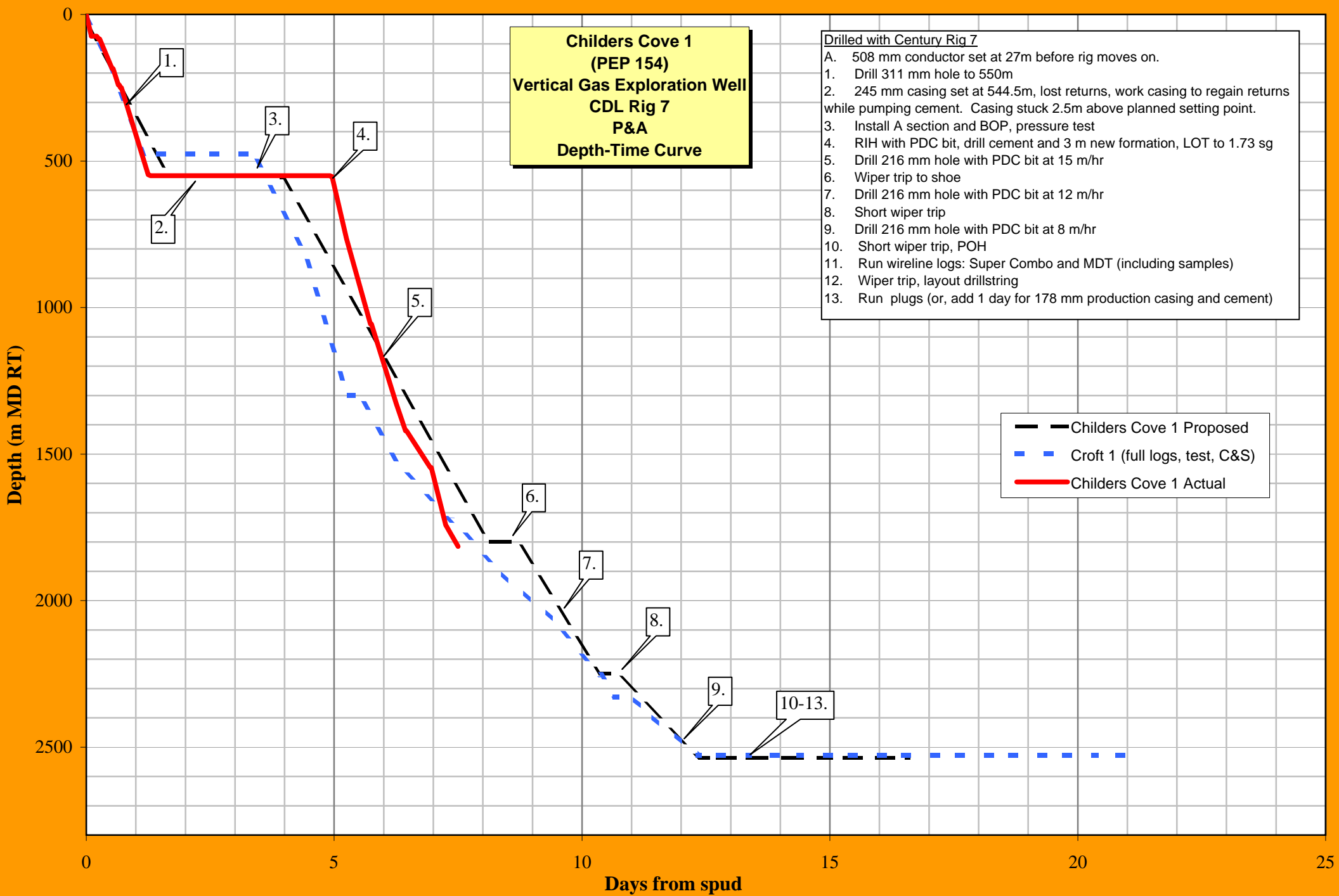


FIGURE 4